

# AGS Series

## AXIAL GRINDER PUMPS

POWERFUL PERFORMANCE FOR THE  
MODERN WASTEWATER STREAM



Based on technology developed and tested in the toughest wastewater environments, count on the AGS Series axial grinder pumps to handle the challenging demands of today's residential wastewater.

The AGS Series grinder pumps feature a powerful axial grinder and semi-open impeller technology to easily slice through the solids, flushables and trash found in the modern wastewater stream without roping or clogging. This technology reduces waste to a fine slurry, resulting in minimal downtime and service issues. The AGS Series axial grinder pumps available through Goulds Water Technology offer proven solutions for a range of residential applications.

### APPLICATIONS:

- 2" Sewage pump replacement
- Residential and small office new construction (wastewater)
- Applications where modern wastewater flushables are creating clogging issues

### ADVANTAGES:

**Proven design:** The axial grinder and semi-open impeller technology reduce downtime caused by clogging or roping.

**Broad range of solutions:** Available in single phase .5 hp (115V or 230V) and 1 hp (115V or 230V) options.

**Trusted performance:** Models deliver up to 66' TDH and flow rates of 53 gpm.

**Ease of installation:** Fixed balanced attachment to help simplify installation.

**Built to last:** Stainless steel (440C), cutter/plate style configuration and oil cooled motor. Cast iron impeller.

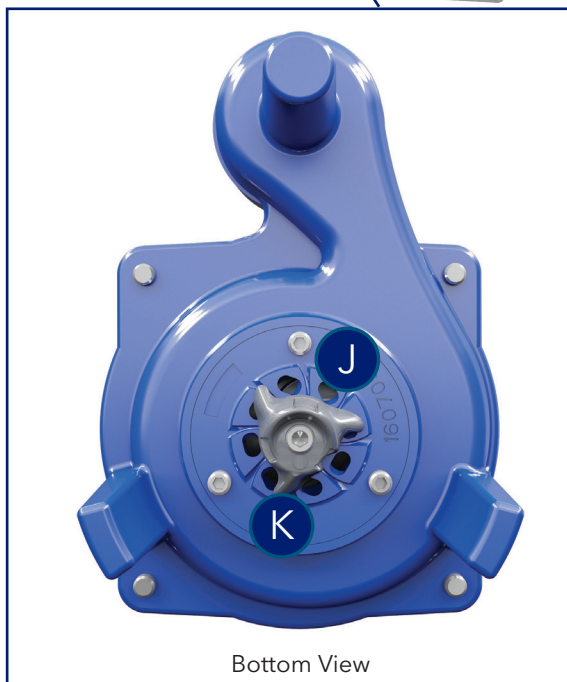
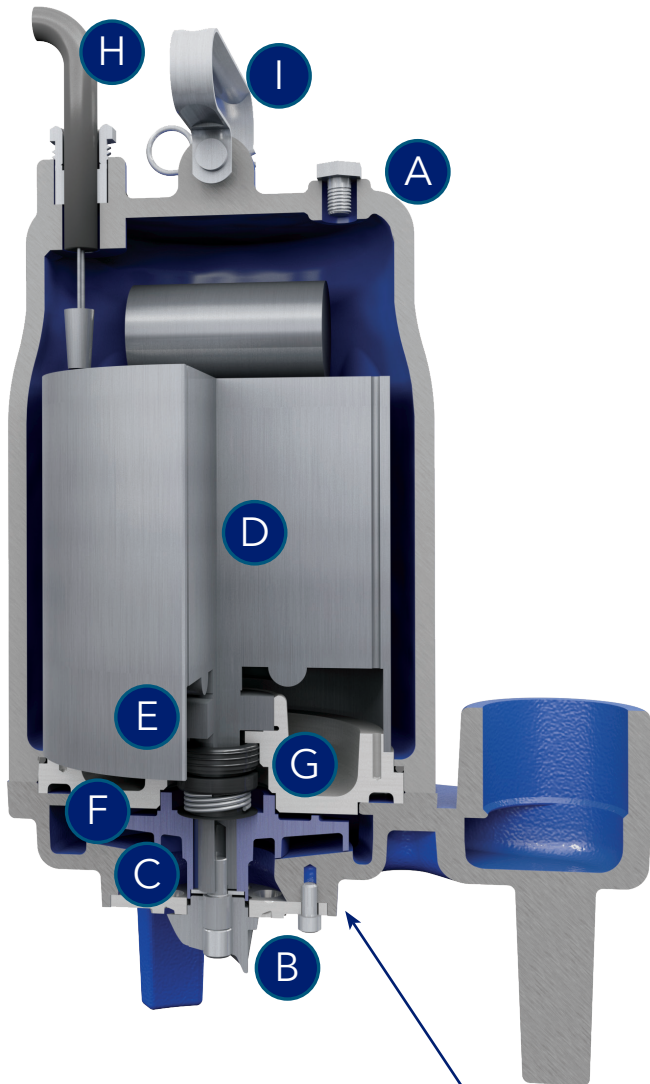
**Continuous operation:** Pump ratings are within the motor manufacturer's recommended working limits and can be operated continuously without damage when fully submerged. Single phase, built-in, auto reset overload (Class F insulation) on all models.

**Warranty:** Three (3) years. Backed by Goulds Water Technology service and support.





## Built to Perform



Bottom View

### FEATURES:

- A. **Casing:** One piece, uni-body cast iron, volute type for high efficiency.
- B. **Axial grinder:** Stainless steel, eight (8) hole cutter plate, three (3) blade cutter generating up to 4.9 million bites per hour (up to 66' TDH).
- C. **Semi-open impeller:** Powerful, non-clogging, cast iron design. Balanced for smooth operation.
- D. **Motor:** Oil-cooled/fully submerged in high grade turbine oil for more efficient heat dissipation, permanent lubrication of bearings and mechanical seal, and protection against outside environment.
- E. **Motor shaft:** AISI 300 series stainless steel.
- F. **Bearing housing/bearings:** Upper and lower ball bearings for precision positioning of parts and to carry all radial and thrust loads.
- G. **Mechanical seal:** Hardfaced silicon carbide on silicon carbide for longer life, stainless steel metal parts, BUNA-N elastomers (standard feature).
- H. **Power cord:** Severe duty rated, oil and water resistant 20 foot cord. SJTOW power cord with NEMA three prong grounding plug.
- I. **Fixed balanced handle:** For ease of installation.

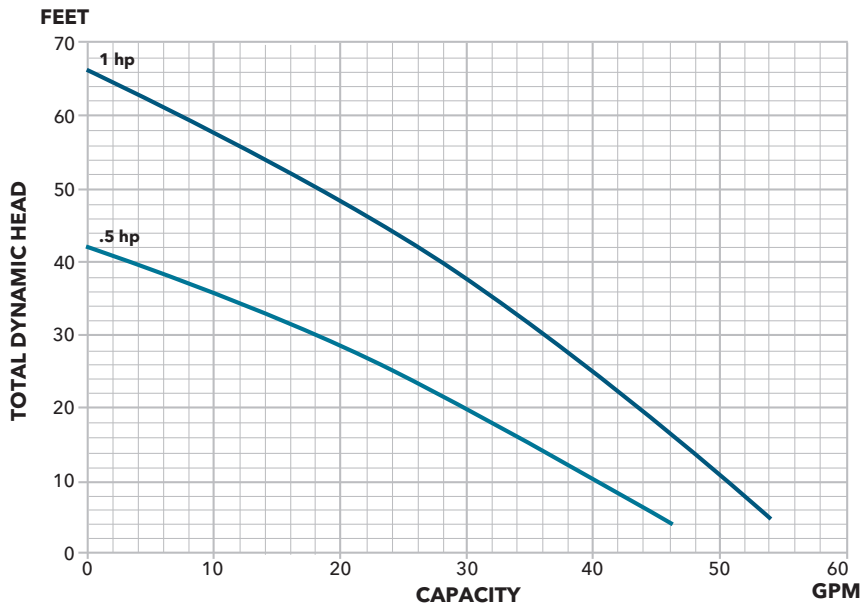
**Axial Grinder Technology:** Stainless steel, non-clogging design. Generates up to 4.9 million bites per hour (up to 66' TDH).

J. Eight (8) hole cutter plate.

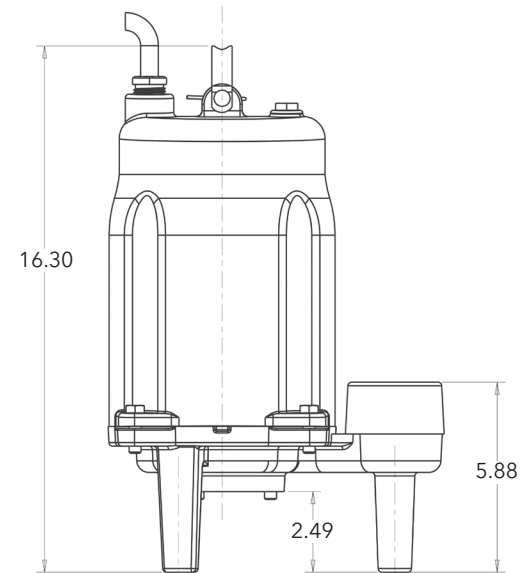
K. Three (3) blade cutter with advanced design features to provide superior performance.

# AGS Series Axial Grinder Pumps

## PERFORMANCE CURVE

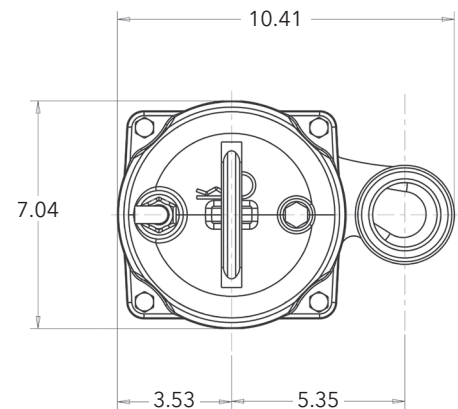


## DIMENSIONAL DRAWING



## SPECIFICATIONS

	AGS0511*	AGS0512*	AGS1011*	AGS1012*
Voltage	115	230	115	230
Amps	9A	4.5A	11A	5.5A
HP	0.5		1	
Capacity	46 gpm		53 gpm	
Head	42 feet, TDH		66 feet, TDH	
Grinder	Axial, Stainless Steel (440C)			
Cutter Plate	8 Hole, 3 Blade, Stainless Steel (440C)			
Bites Per Hour	4.9 Million			
Impeller	Semi-Open, Cast Iron			
Phase	Single			
Speed	3500 rpm			
Discharge	2"			
Motor	Oil Cooled, CSCR			
Casing	Uni body, Class 30 Cast Iron			
Shaft	Stainless Steel, 300 Series SS			
Bearings	Upper/Lower Sealed Ball Bearings			
Hz	60			
Seal	Hardfaced Silicon Carbide on Silicon Carbide			
Cord	20 feet			
Insulation	Class F			
Weight	65 lbs			
Warranty	3 Year			



\* Also available for wastewater basin kits including the CWK24-AGS Wastewater Basin Kit, part numbers: 24AGS0511, 24AGS0512, 24AGS1011 and 24AGS1012.



Xylem Inc.  
Phone: (866) 325-4210 • Fax: (888) 322-5877  
[www.xylem.com/goulds](http://www.xylem.com/goulds)

Goulds is a registered trademark of Goulds Pumps, Inc. and is used under license.  
© 2019 Xylem Inc. BRAGSSERIES R1 June 2019